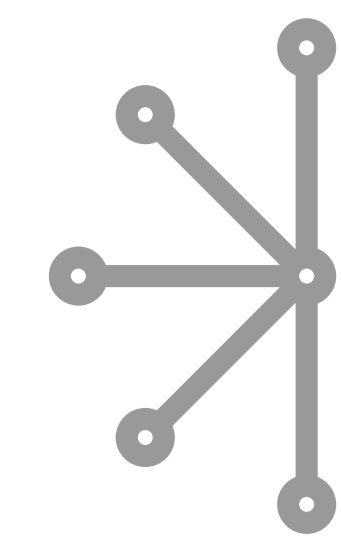




Technische
Universität
Braunschweig



Algorithmik
Institut für Betriebssysteme
und Rechnerverbund

EXDIMUM

Extremwettermanagement mit digitalen Multiskalen-Methoden

AG1 Satellitendaten



Data Set Acquisition

Download
from Planet

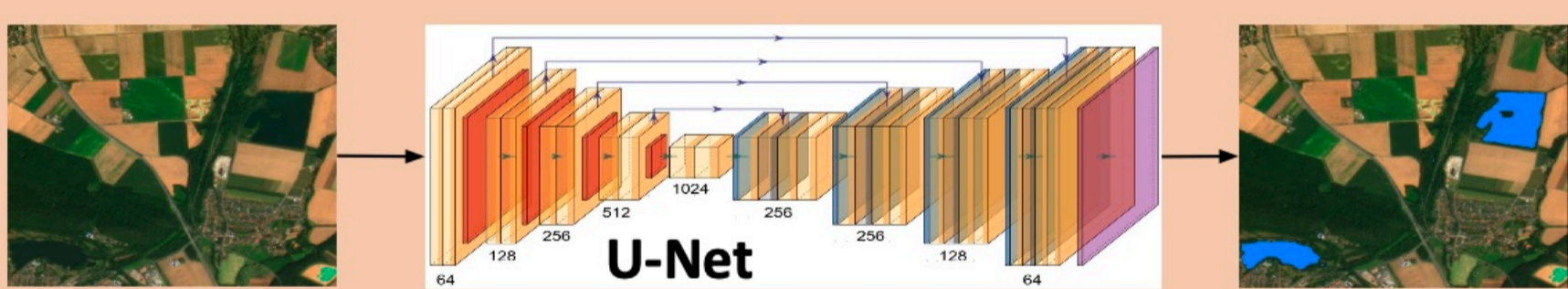


Labeling System

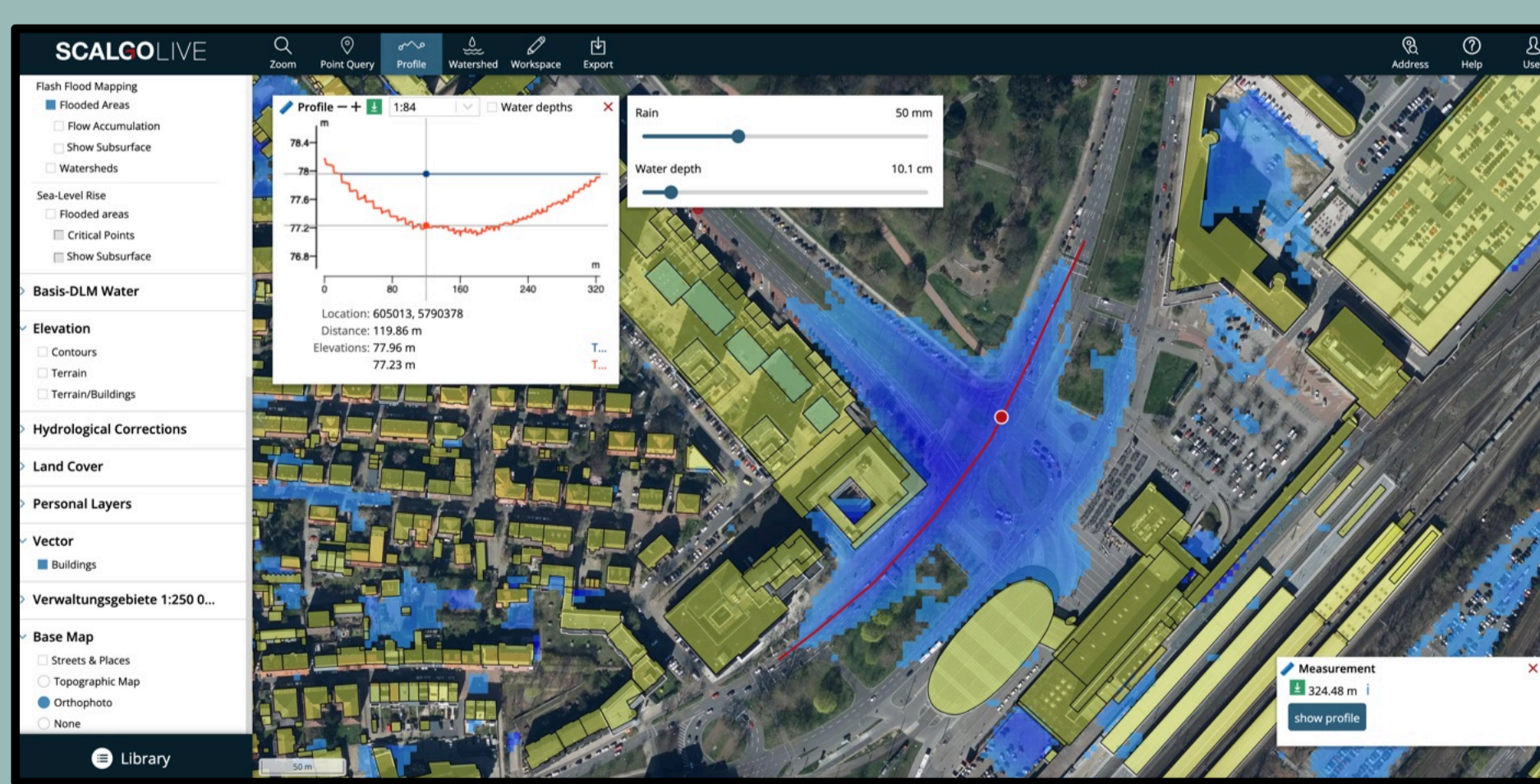
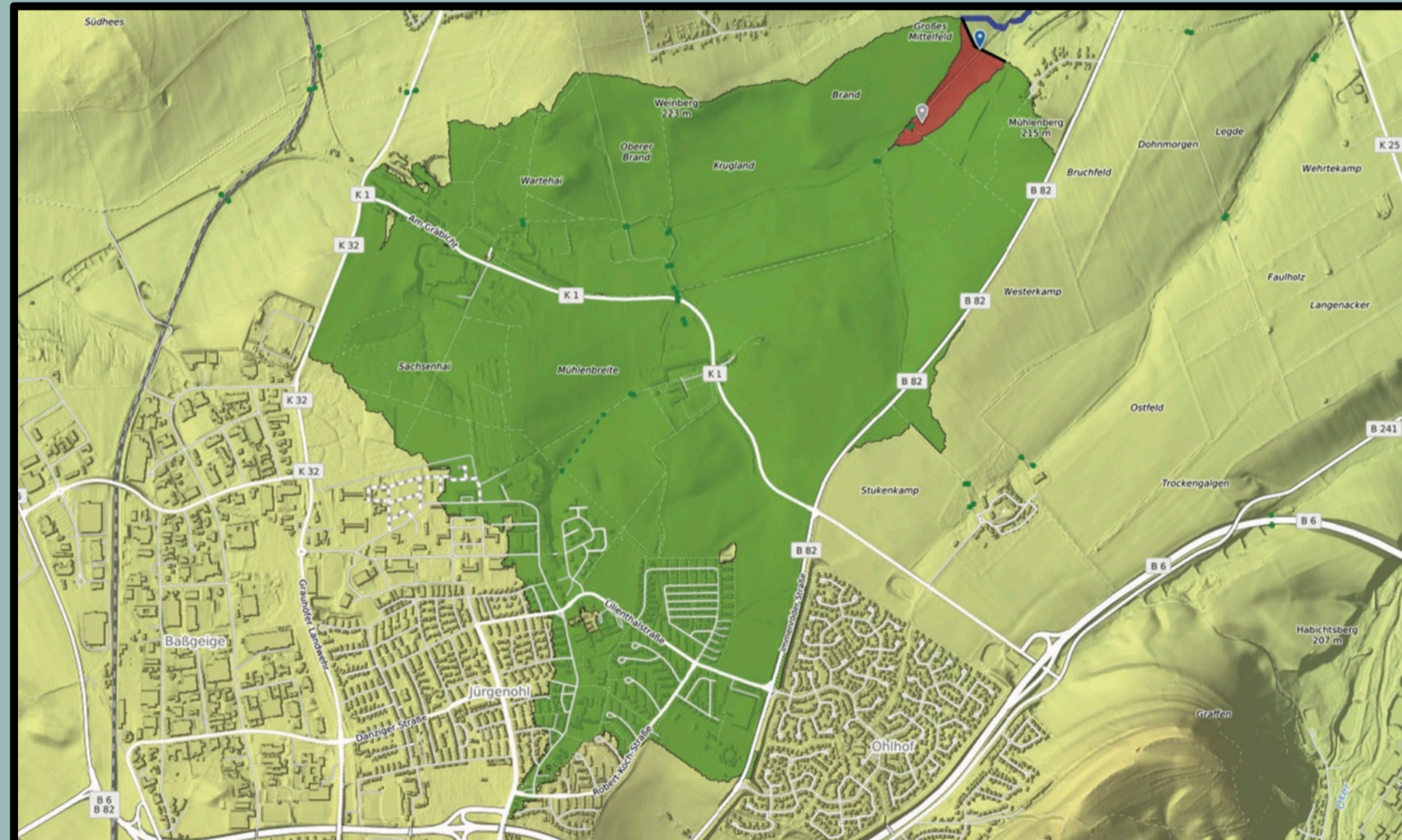
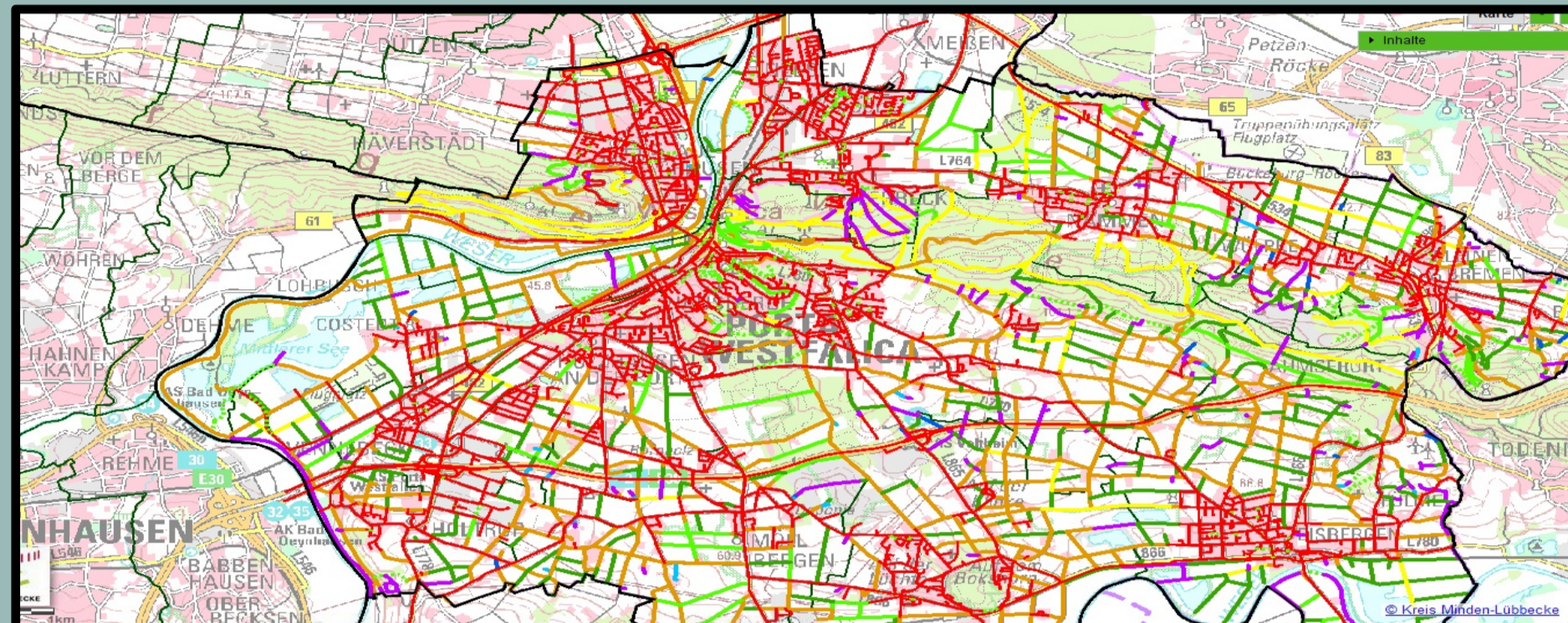
NDWI
Thresholding
Median Filtering



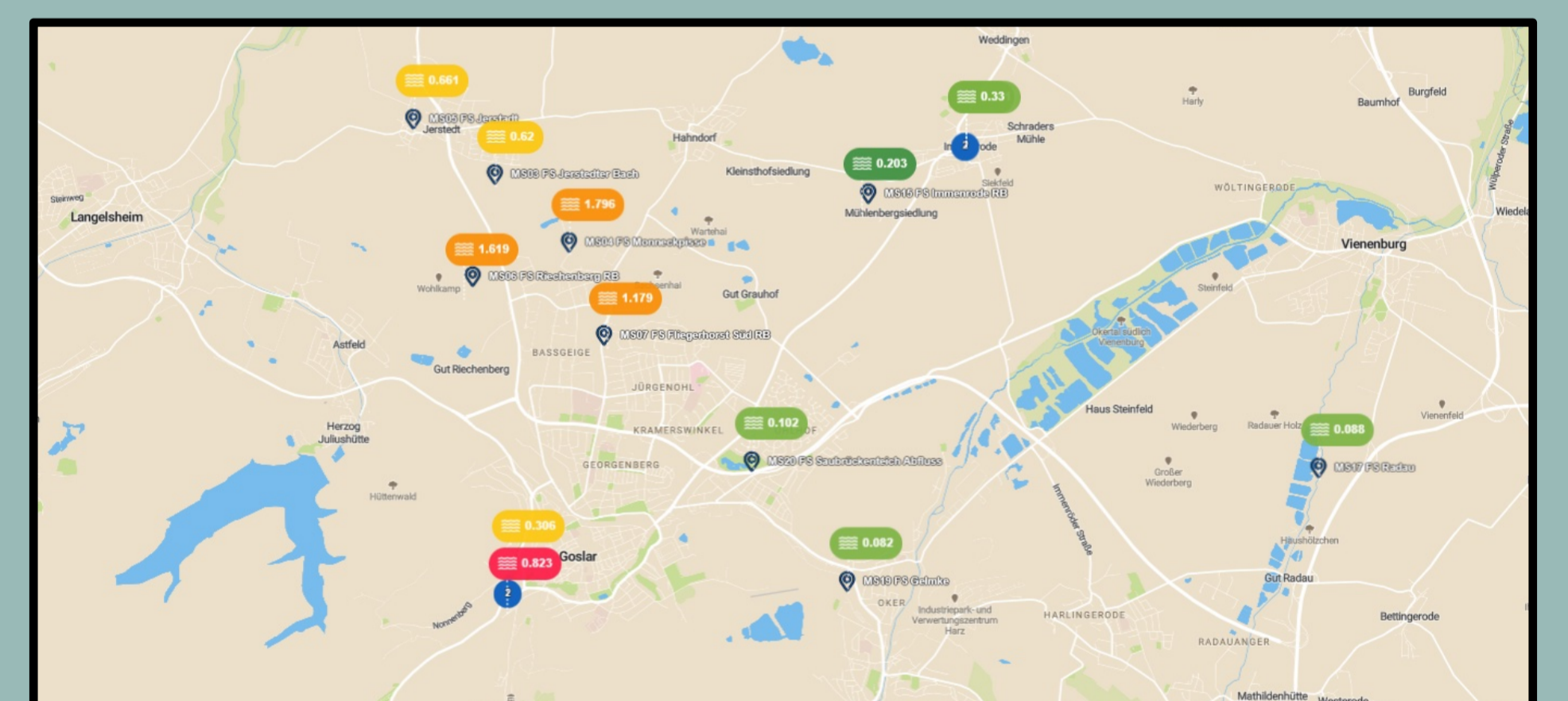
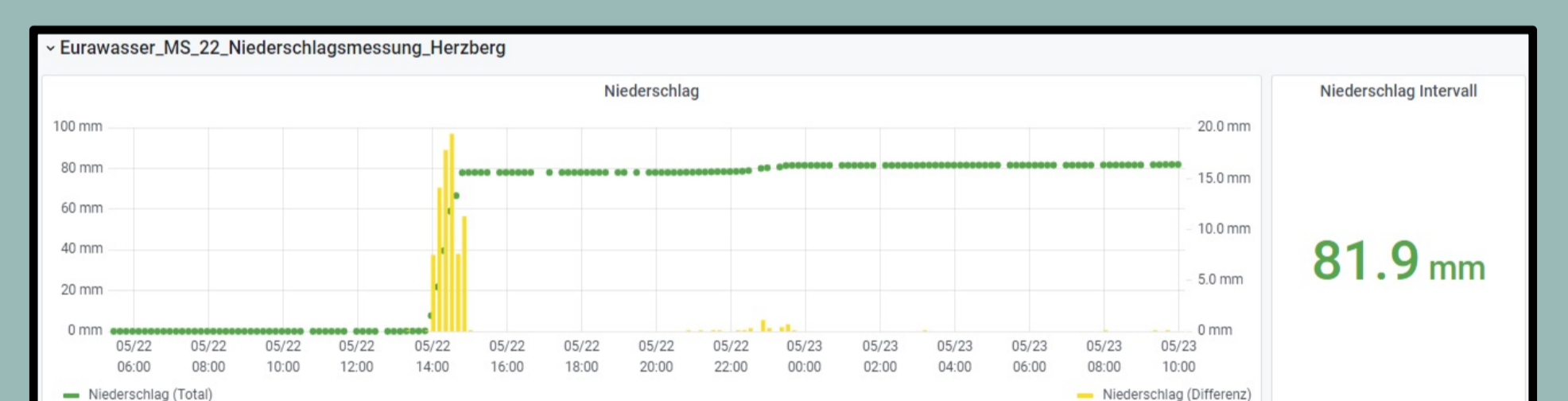
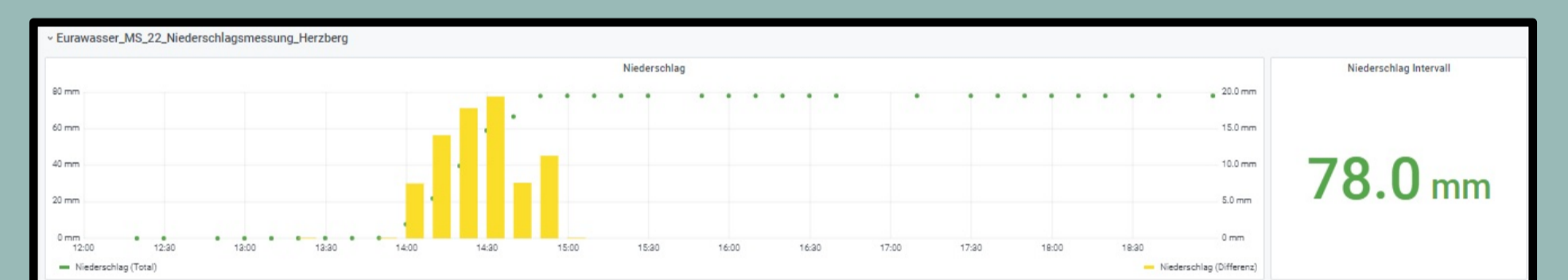
Autonomous Water Segmentation



AG2 Geodaten



AG3 Bodensensordaten



GEFÖRDERT VOM



FONA
Forschung für Nachhaltigkeit